

WANTAI SARS-CoV-2

Ag Rapid Test (Colloidal Gold)

(Anterior Nasal Swab and Saliva Specimens)
Intended for Self-testing by Layperson

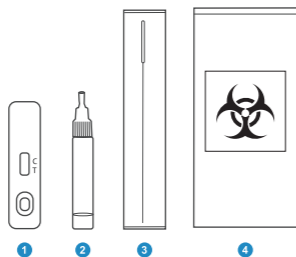
Operation Guide

Preparation

- Read carefully the Instructions for Use before you conduct the test.
- Take all the components out and place them on the table.

Test components :

- 1 - Test Cassette
 - 2 - Extraction Vial (0.5mL)
 - 3 - Disposable Sterile Swab
 - 4 - Plastic Sealable Bag
- Instructions For Use & Operation Guide



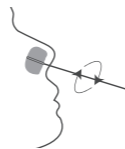
You may scan the QR code to watch the operation video.



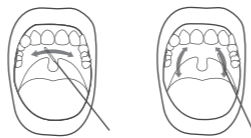
Step 1. Collect Specimen

- Open the swab pouch.
- You may choose between two specimen types for collection:

Anterior nasal swab specimens: Insert the entire absorbent tip of the swab into your nostril and slowly rotate in a circular path against the inside of both of your nostrils. Rotate 4 times for total of 15 seconds.



Or,
saliva specimens: Insert the entire absorbent tip of the swab into your mouth and slowly wipe the oral, upper palate and the inside of the left and right cheeks (be sure to collect any saliva that may be present on the swab).

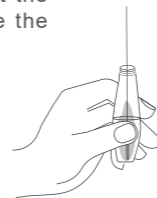


Step 2. Extracting specimens

- Unscrew the cap of the extraction vial.
- Place the swab collected into the extraction vial with the buffer, rotate the swab vigorously to mix well with the buffer.

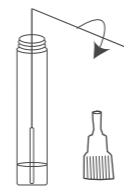


- Squeeze the swab against the inside of the vial to release the liquid from the swab.



Step 3. Remove the swab

- Snap off the end of the swab at the break line and leave the swab head inside the vial.

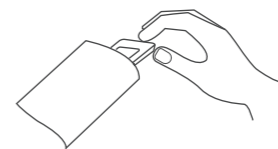


- Screw tightly the cap of the vial. Break the cap of the extraction vial.

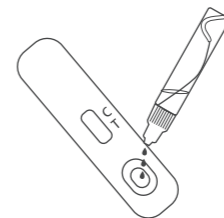


Step 4. Testing

- Open the cassette pouch and place the cassette on a flat surface.

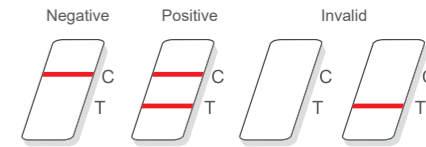


- Squeeze the vial to add three (3) drops of sample from the extraction vial into the sample well of the test cassette. Wait for 15 minutes.



Step 5. Read the results

- Read the test result at 15 minutes, but no more than 30 minutes



Disposal

- Place all the components in the provided plastic sealable bag. Seal the bag and throw it away.

